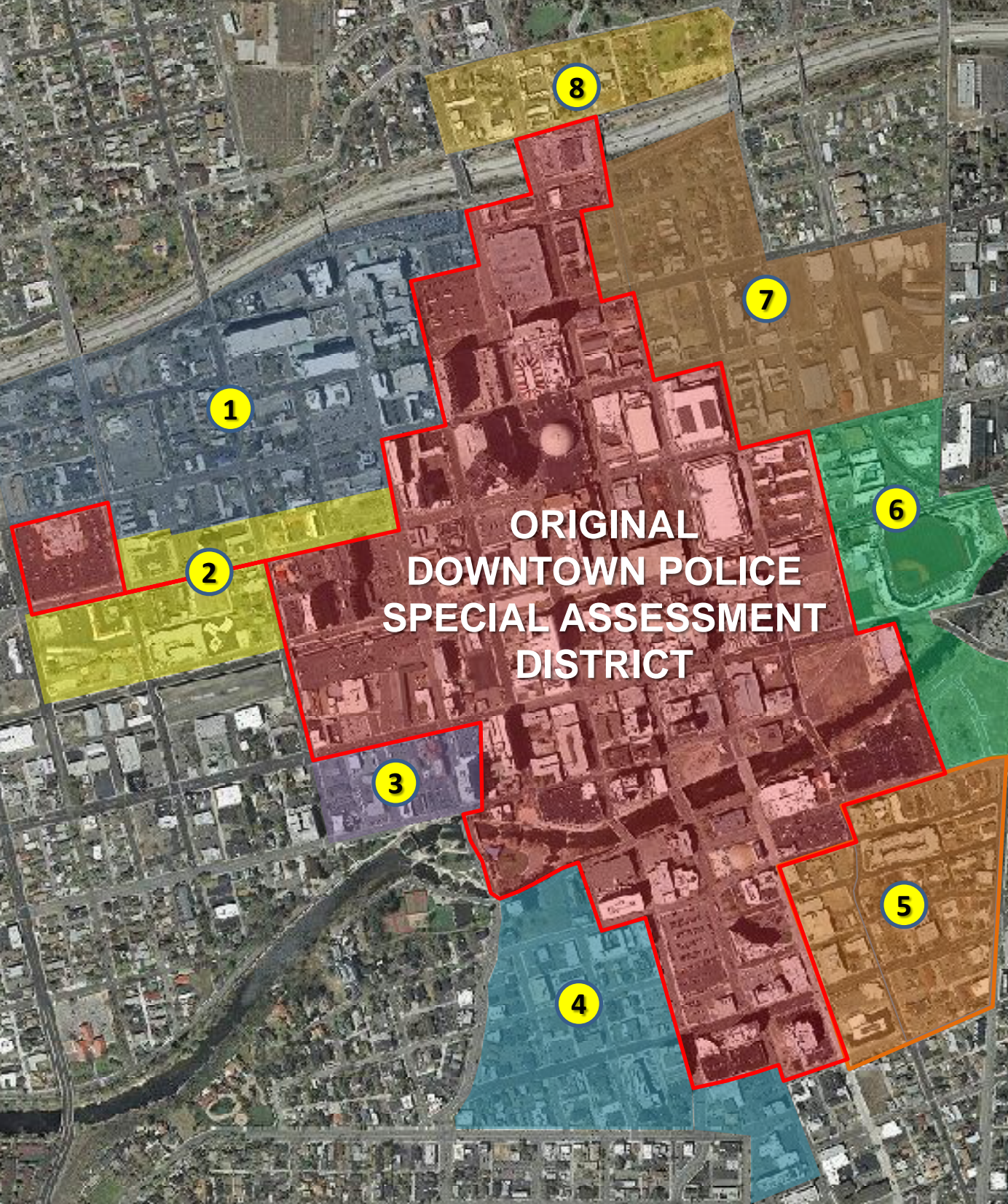


Potential Downtown Police Expansion Areas

Original Downtown Police SAD

- 1** RDA #2 St. Mary's W. 6th & Arlington Avenue out to Vine Street
- 2** W. 4th Street, North & South to ReTRAC
- 3** Arlington Towers, Greyhound Bus Terminal
- 4** Parks Towers, Hill-Flint-Ridge Court Street, Porsche Bldg. & Wild Orchid
- 5** Area between Va St. & Holcomb from Old City Hall to Mill
- 6** Ballpark & CAC
- 7** Industrial Area North of E. 4th St. to the freeway
- 8** UNR Transition Area North of Freeway



Area	1995	2010	2011	2012	2013
<i>Current</i>	18,838	27,101	26,479	24,093	24,052
1	1,287	1,386	1,374	1,254	1,429
2	687	1,693	1,603	1,478	1,462
3	861	151	82	61	66
4	900	785	766	690	742
5	711	1,009	833	795	803
6	2,925	2,424	2,374	2,342	3,104
7	1,649	2,438	2,495	2,577	2,601
8	604	1,319	1,292	1,251	1,482

CALLS FOR SERVICE