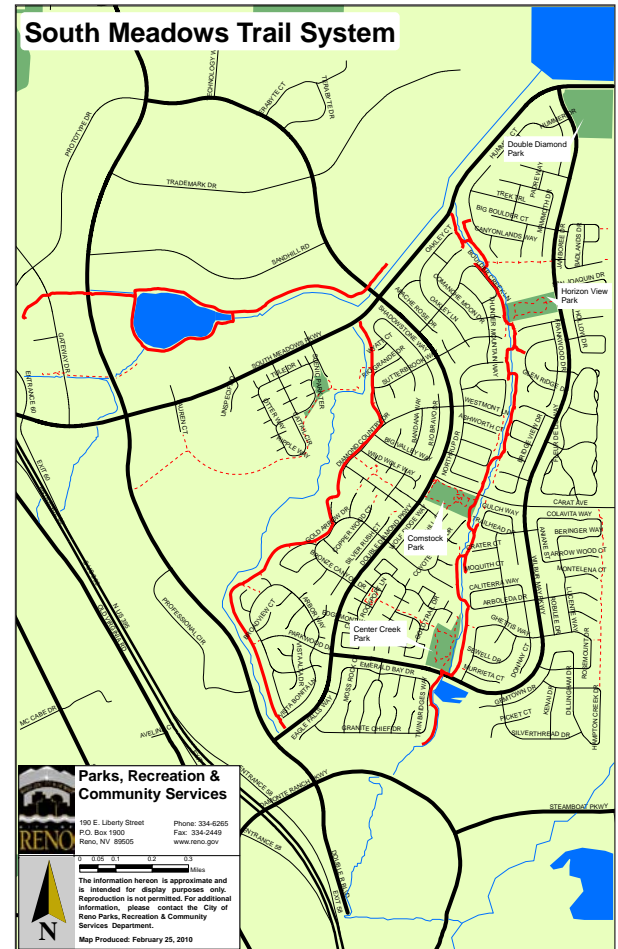


# SOUTH MEADOWS TRAILS

Nestled in the quiet Double Diamond neighborhood, this extensive and paved trail network is perfect for families, walkers, bicyclists and runners alike. Despite its seemingly suburban location, a wetland area with a variety of animals resides next to the trail. Additionally, the trails pass several parks and playgrounds. Other amenities include restrooms, parking and a trailhead. Enjoy the tranquility of this trail network.

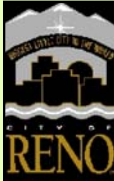
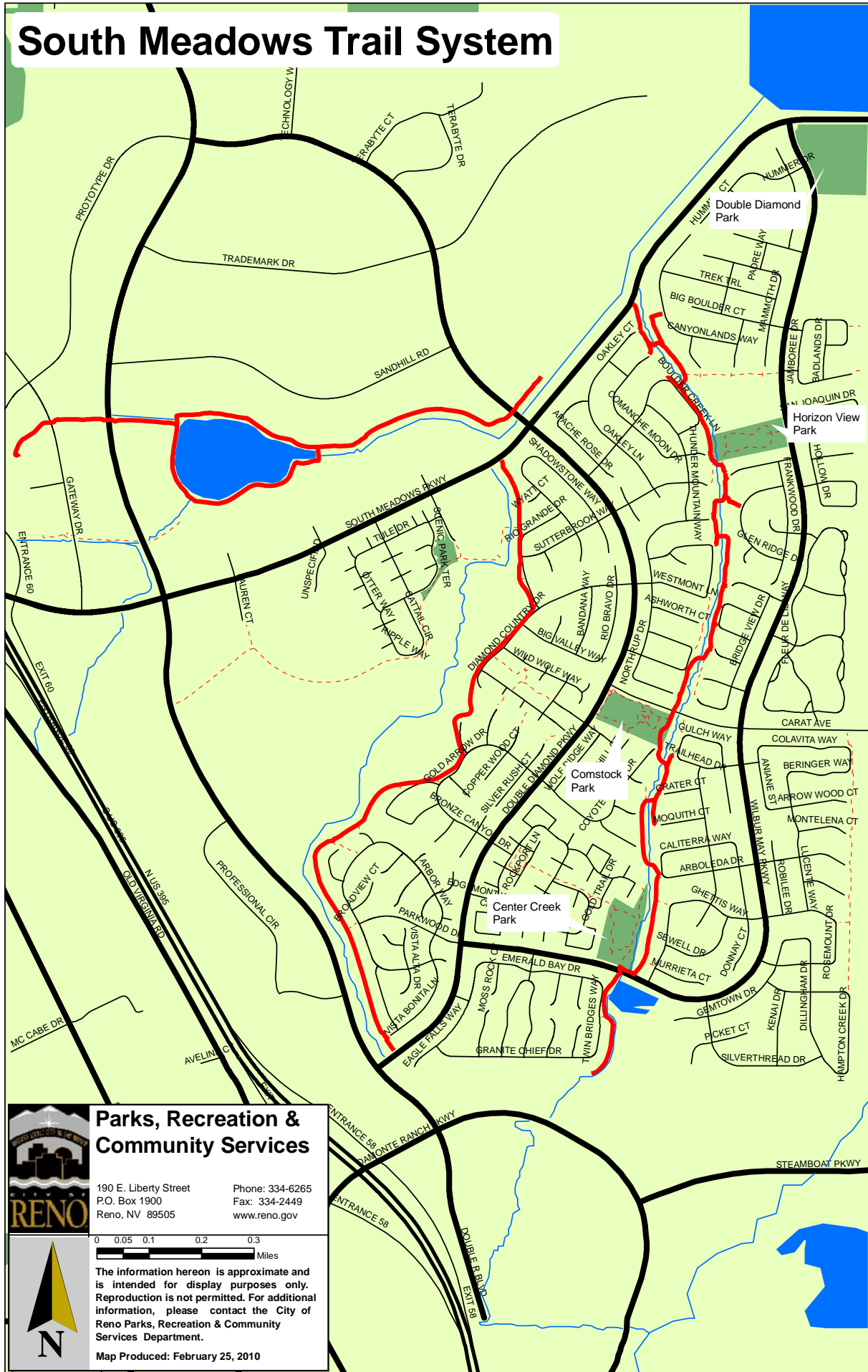
Length	5 miles
Minimum trail elevation	4440 ft
Maximum trail elevation	4500 ft
Gain in elevation	60 ft
ADA Accessible	Yes
Surface type	Paved
Allowed use	Pedestrian, bicycling



Directions: Access trails at Center Creek Park, 1595 Wilbur May Parkway; Comstock Park, 1650 Carat Avenue; Evergreen Park, 9555 Evergreen Drive; and Horizon View Park, 9675 Wilbur May Parkway



# South Meadows Trail System



## Parks, Recreation & Community Services

190 E. Liberty Street Phone: 334-6265  
 P.O. Box 1900 Fax: 334-2449  
 Reno, NV 89505 www.reno.gov

0 0.05 0.1 0.2 0.3 Miles

The information hereon is approximate and is intended for display purposes only. Reproduction is not permitted. For additional information, please contact the City of Reno Parks, Recreation & Community Services Department.

Map Produced: February 25, 2010