



City of Reno
Parks, Recreation &
Community Services
P.O. Box 1900
Reno, NV 89505

Parks, Recreation & Community Services

Evelyn Mount Northeast Community Center



City of Reno
Parks, Recreation and Community Services
1301 Valley Road
Reno, NV 89512
(775) 334-2262
www.cityofreno.com



September 2009

Evelyn Mount Northeast Community Center Facilities



Indoor Heated Pool



Pool Patio



Showers/Lockers

Gymnasium



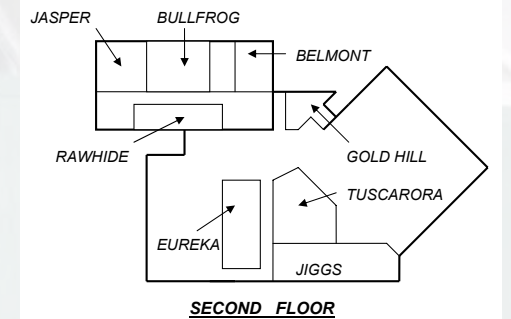
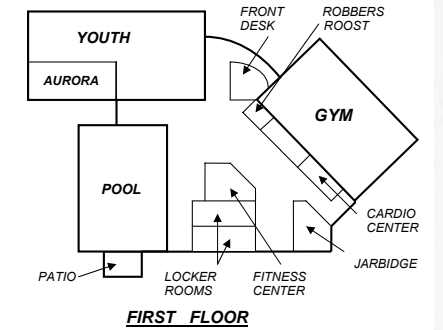
Fitness Center

Cardio Center



Aerobics & Dance Studios

Conference/Meeting Rooms



Hours of Operation

NECC BUILDING AND FITNESS CENTER	
Monday - Thursday	7am - 9pm
Friday	7am - 8pm
Saturday	9am - 3pm
Sunday	9am - 4pm
GYMNASIUM	
Monday - Friday	11:30am - 2pm
Saturday	9am - 3pm
Sunday	9am - 1pm 1 - 3pm (wheelchair sports)
POOL	
LAP SWIM	
Monday - Friday	7 - 10am & 1 - 2pm
Saturday	11am - 12pm
PUBLIC SWIM	
Saturday	12 - 2:30pm

Room Rentals

Room Features:

- Six individual meeting rooms
- Variety of sizes and amenities
- Tables and chairs
- Computer Training Center
(PC workstations require Technology Department coordination and approval)



EMNECC Pool

Pool Features:

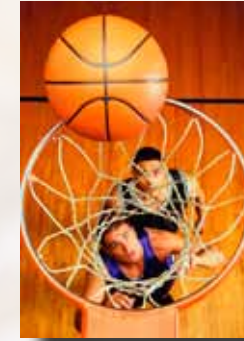
- Indoor pool with four lanes
- Private and semi-private swim lessons for all ages and abilities
- Therapeutic steps, lift, variable speed lap lanes
- Private rentals



Gymnasium

Gym Features:

- One regulation basketball court (or two side courts)
- Six basketball hoops
- Volleyball nets
- Gym floor covers for special event use



Fitness Center

Fitness & Cardio Center Features:

- Cardio machines include treadmills; elliptical trainers; recumbent bikes; upright bikes; stair climbers
- Fitness equipment includes free weights, barbells, benches and strength training machines



Open Gym Fees

	Single Admission	Punch Pass (10 Visits)	Quarterly (3 months)
Adult (18+)	\$2	\$20	\$60
Youth/Senior (8-17/55+)	\$1	\$10	\$30

Fitness Center Fees

	Single Admission	Punch Pass (10 Visits)	Quarterly (3 months)
Adult (18+)	\$4	\$35	\$80
Youth/Senior (14-17/55+)	\$3	\$25	\$60

Gym and Building Rental Fees

	CAPACITY	
Gym	300	\$45/hr
Small Meeting Rooms	25 max	\$10/hr
Large Meeting Rooms	25 plus	\$20/hr
Tuscarora Room	25 plus	\$30/hr
Dance Room	30	\$30/hr
Computer Training Room	20	\$100/hr
Pool	100	\$60/hr
Gym Floor Cover	N/A	\$200
Volleyball Setup	N/A	\$40
Quarterly Rental - Discounts for Gym, Meeting & Dance Rooms	10-24 uses/quarter - 10% off 25-49 uses/quarter - 15% off 50+ uses/quarter - 20% off	

Pool Fees

LAP SWIM/PUBLIC SWIM				
	Single Admit.	Punch Pass (10 Visits)	Quarterly (3 months)	Annual
Adult (18+)	\$5	\$40	\$120	\$300
Senior/Child (55+ /under 6)	\$2	\$15	\$60	\$150
Youth (6-17)	\$3	\$25	\$90	\$225
WATER FITNESS CLASSES				
	Single Admission	Punch Pass (10 Visits)		
Adult (18+)	\$7	\$65		
Youth/Senior (8-17/55+)	\$6	\$55		

Combination Passes and Fees

FITNESS CENTER & OPEN GYM Good for the Fitness Center and Open Gym				FITNESS CENTER & POOL Good for the Fitness Center, Open Swim and Lap Swim			
	Single Admission	Punch Pass (10 Visits)	Quarterly (3 months)		Single Admission	Punch Pass (10 Visits)	Quarterly (3 months)
Adult (18+)	\$5	\$45	\$100	Adult (18+)	\$6	\$55	\$120
Youth/Senior (14-17/55+)	\$4	\$35	\$80	Youth/Senior (14-17/55+)	\$5	\$45	\$100
PREMIUM Good for the Fitness Center, Open Gym, Open Swim and Lap Swim							
	Single Admission	Punch Pass (10 Visits)		Quarterly (3 months)			
Adult (18+)	\$7	\$65		\$175			
Youth/Senior (14-17/55+)	\$6	\$55		\$150			